



# Welcome!

Susquehanna River Rail Bridge Project

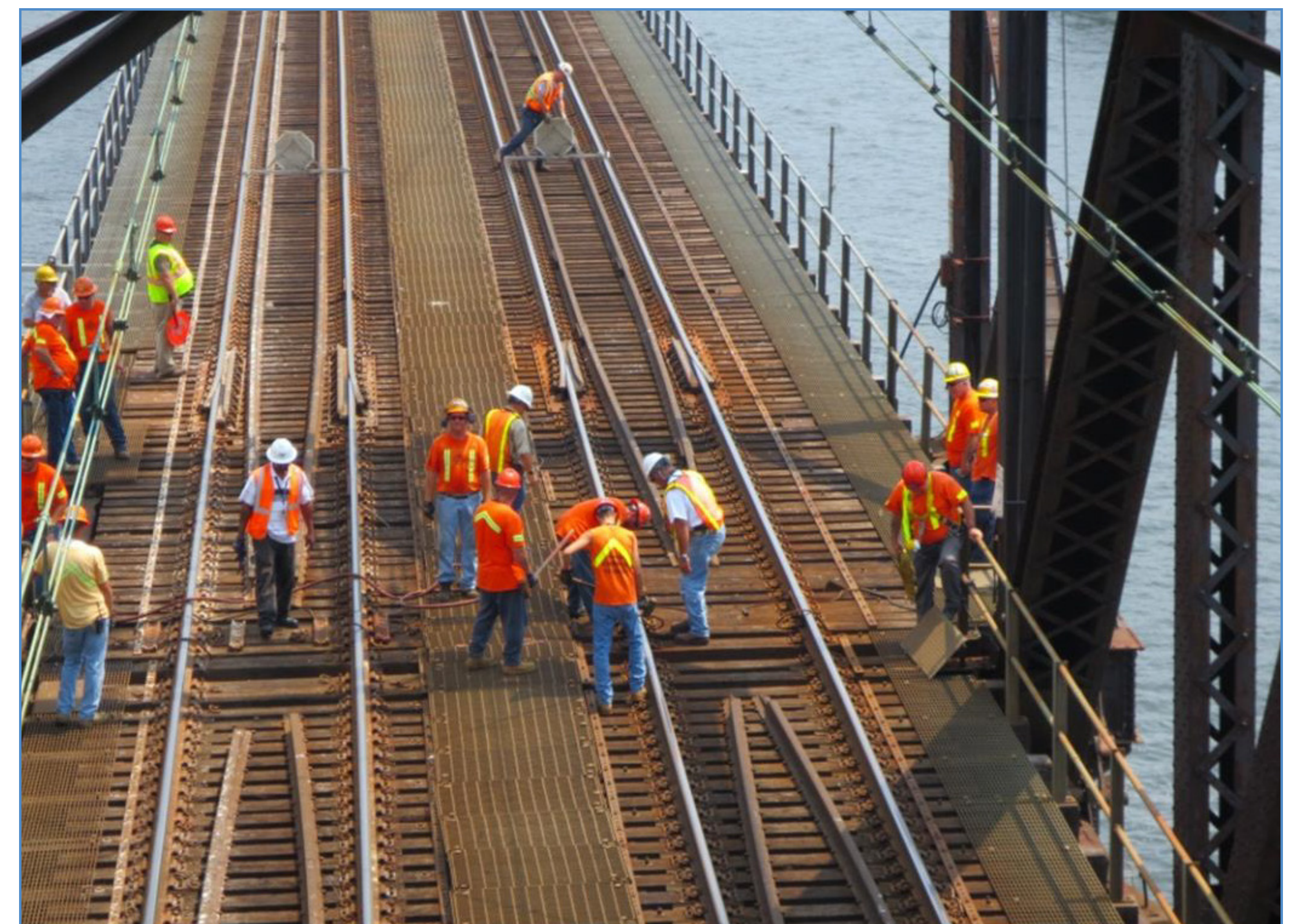
**Public Outreach Information Session**



# Project Purpose and Need

The problems posed by the existing Susquehanna River Rail Bridge include:

- Functionally obsolete and aging infrastructure
- Speed and capacity constraints
- Operational inflexibility
- Maintenance difficulties
- Conflicts with maritime uses



*Amtrak crew manually opening the movable bridge span to accommodate marine traffic.*



# Project Purpose and Need

**The primary purpose of the Susquehanna River Rail Bridge Project is to provide continued rail connectivity along the Northeast Corridor (NEC).**

The project goals include:

- Improve rail service reliability and safety
- Improve operational flexibility and accommodate reduced trip times
- Optimize existing and planned infrastructure and accommodate future freight, commuter, intercity, and high-speed rail operations
- Maintain adequate navigation and improve safety along the Susquehanna River



*The Northeast Corridor merges from four tracks to two tracks (heading south from Perryville to Havre de Grace).*



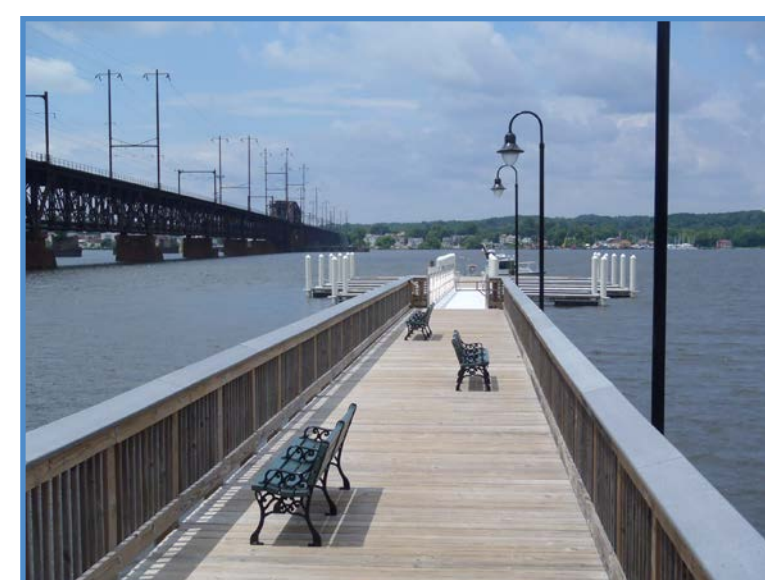
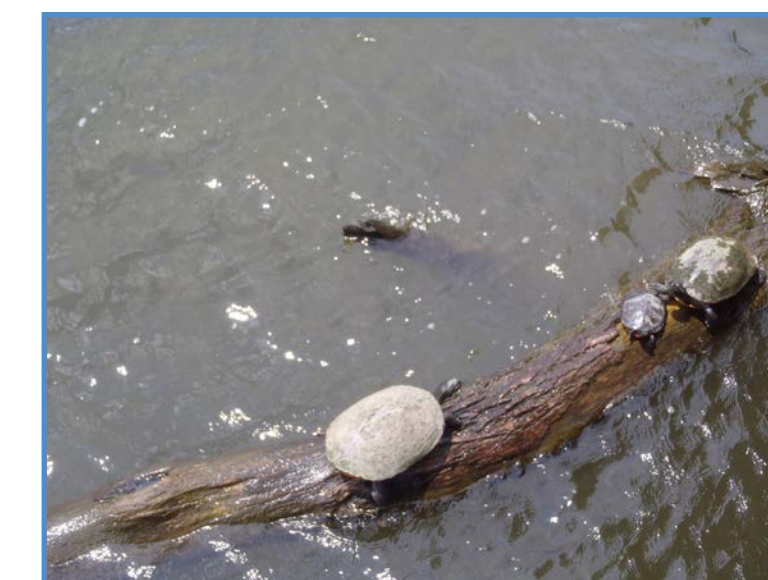
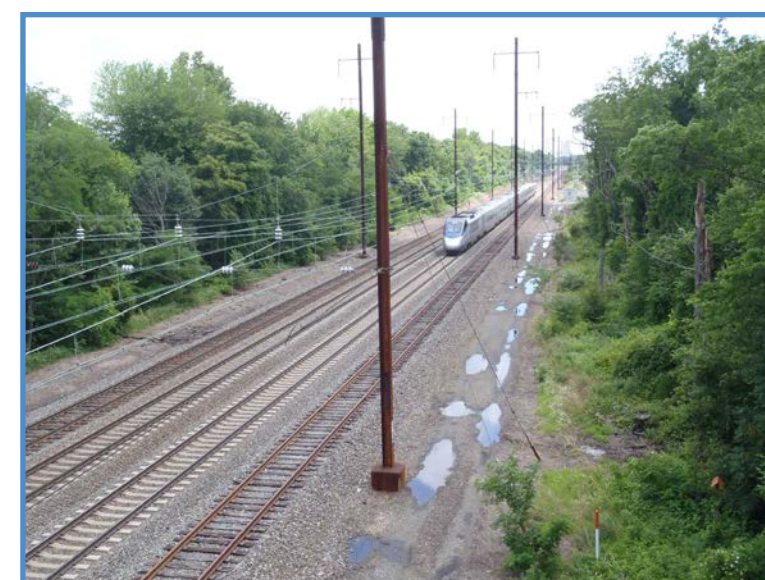
# Environmental Considerations

## National Environmental Policy Act (NEPA)

Requires that we do everything possible to protect and enhance the natural, cultural and human environment. A complete study of all reasonable alternatives (including measures to avoid and minimize impacts) must be prepared, and the results must be made available to public officials and citizens before decisions are made.

### Natural Environment

- Geology / Groundwater Resources
- Soils
- Surface Water
- Floodplains
- Wetlands
- Aquatic Life
- Wildlife



### Socio-Economic Environment

- Demographics
- Community Facilities
- Economic Setting and Land Use
- Noise
- Air

#### Section 404 of the Clean Water Act, Nontidal Wetlands Protection Act

Regulates dredge and fill of Waters of the United States. Guidelines published by the Environmental Protection Agency for evaluating alternatives require that the Corps of Engineers evaluate the proposed project for environmental impacts (including historic and rare/threatened/endangered species impacts) and select the least environmentally damaging, practicable alternative.

#### Endangered Species Act

Ensures that actions are not taken to jeopardize the continued existence of endangered or threatened species or result in the destruction or adverse modification of the critical habitat of such species.

#### Cultural Environment

- Historic Structures
- Archaeological Sites

#### Section 106 of the National Historic Preservation Act

Requires that agencies take into account the effects of a project on properties that are included in or eligible for the National Register of Historic Places.

#### Section 4(f) of the US Department of Transportation Act

Requires that special effort be made to preserve publicly owned public parks and recreation areas, wildlife / waterfowl refuges and historic sites. No project which requires land from these resources may be approved unless 1) there is no feasible and prudent alternative to the use of the land and 2) the action includes all possible planning to minimize harm to the property resulting from such use.

#### Clean Air Act and Clean Air Act Amendments

An air quality analysis must be performed to determine if there are violations of the State or National Ambient Air Quality Standards.

#### Farmland Protection Policy Act

Requires that federal programs minimize conversion of farmland to non-agricultural uses (does not apply to farmland that is zoned or committed (planned) for urban development).

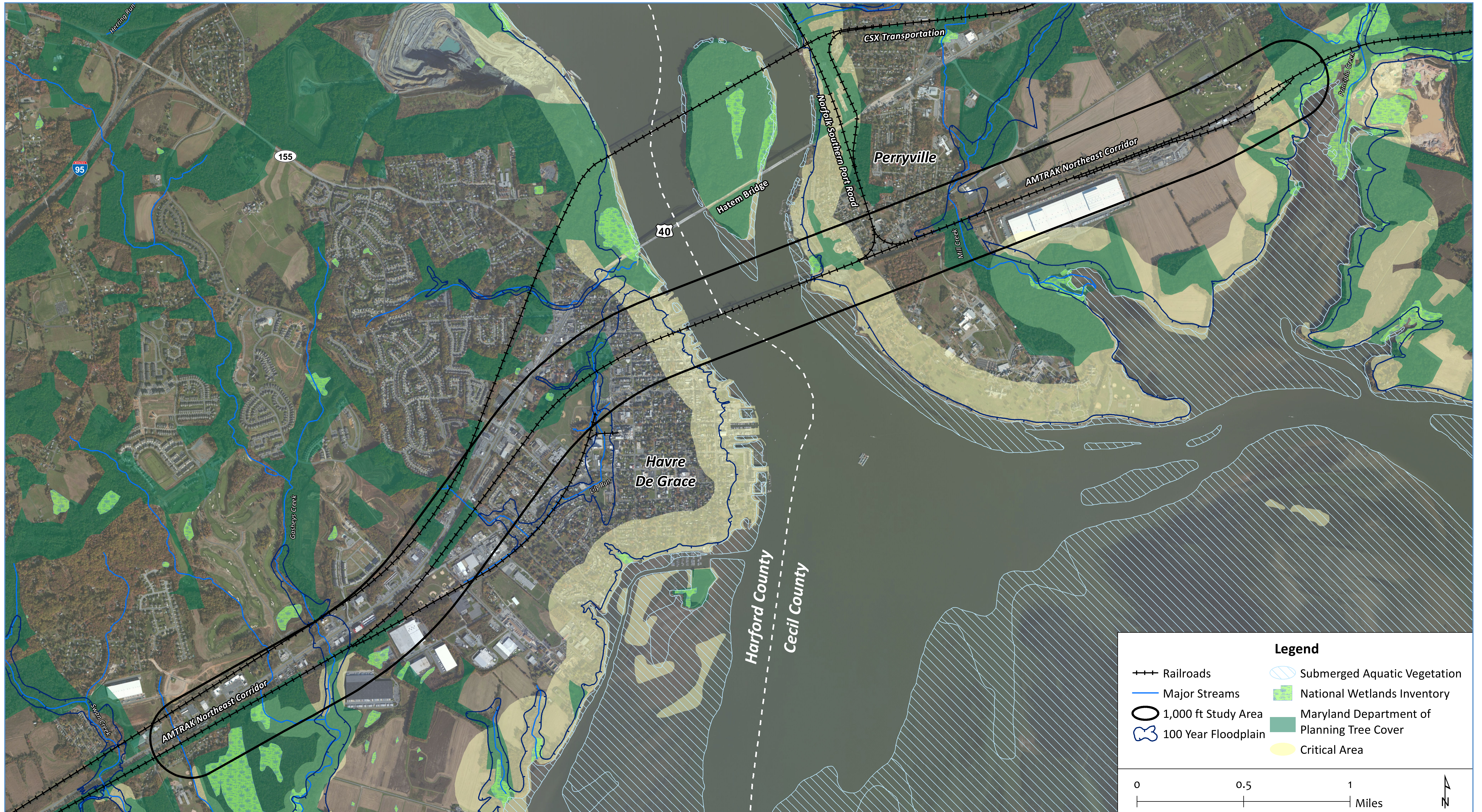
#### Executive Order 12898 (Environmental Justice)

Requires that agencies identify and address disproportionately high and adverse human health or environmental effects on minority or low-income populations.



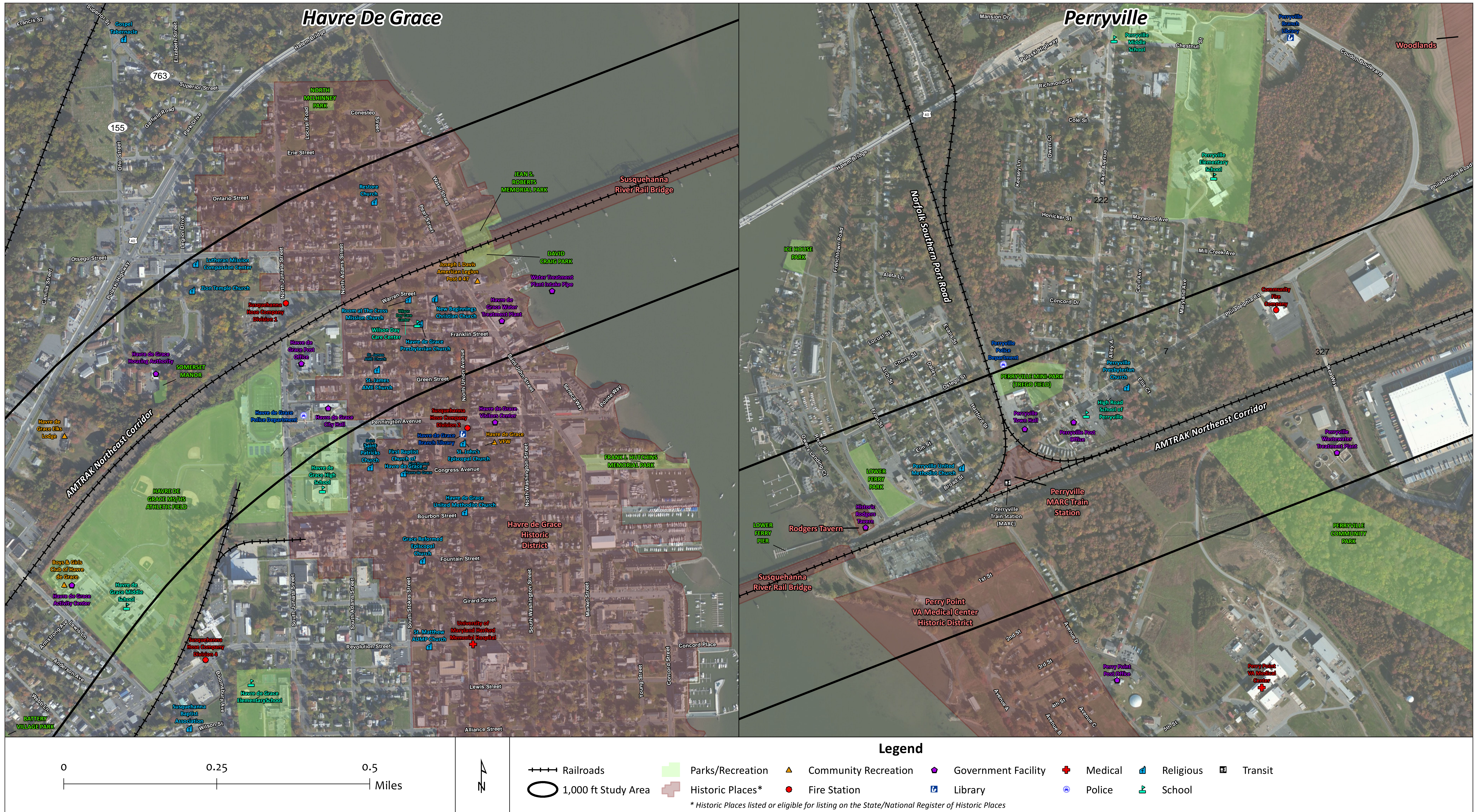
# Natural Resources

Coordinating with resource agencies to identify species or habitats of concern.





# Parks, Historic Places, and Community Facilities





# Two-Step Alternatives Screening Process

## Step 1: Fatal Flaw Screening—criteria developed from Purpose & Need

### ➤ *Pass/fail test—alternative must satisfy all criteria to advance*

- Provides rail connectivity
- Meets navigation requirements
- Has logical termini
- Is feasible & constructible
- Avoids critical property impacts (developed from community input)

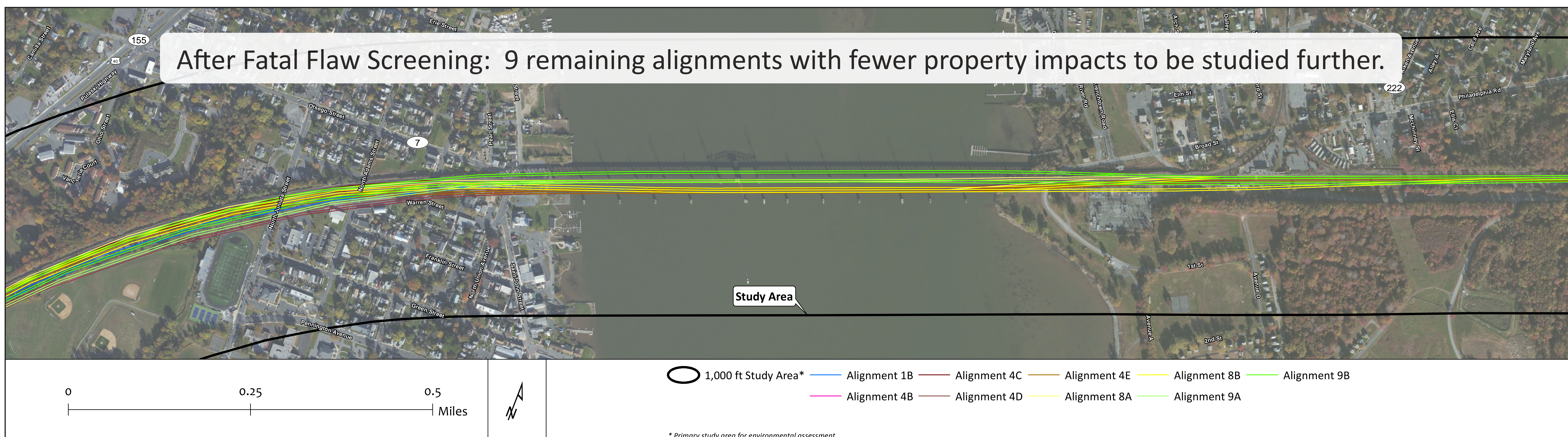
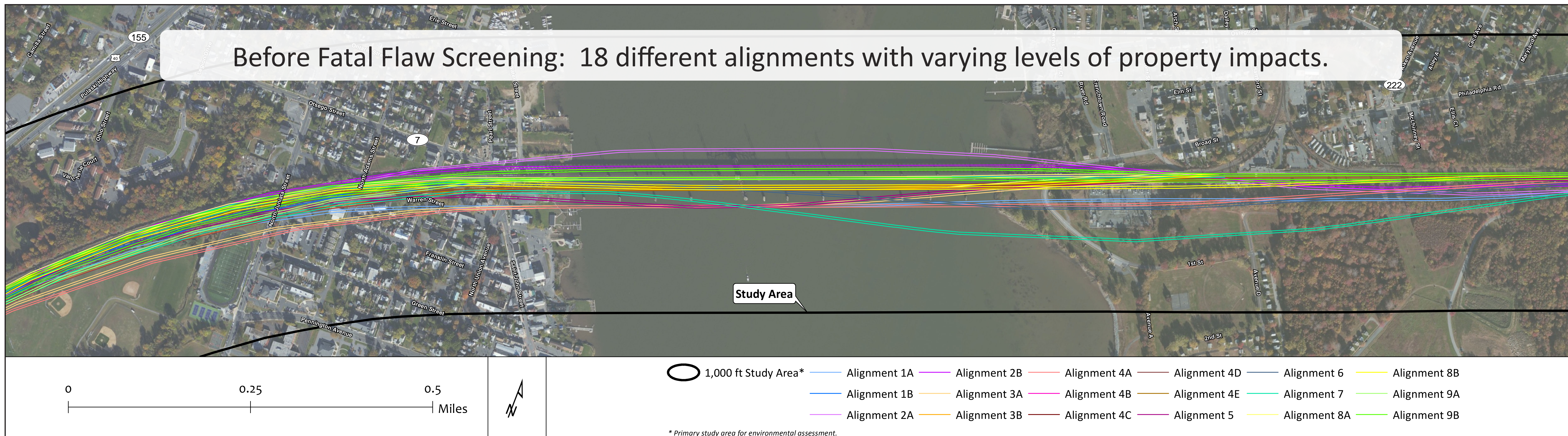
## Step 2: Detailed Screening—based on specific project goals

### ➤ *Relative test—compare/contrast each alternative's ability to meet goals & objectives*

- Optimizes existing and planned infrastructure
- Considers operational, design, construction requirements
- Minimizes environmental/cultural/socioeconomic/property impacts



# Conceptual Alignments Considered



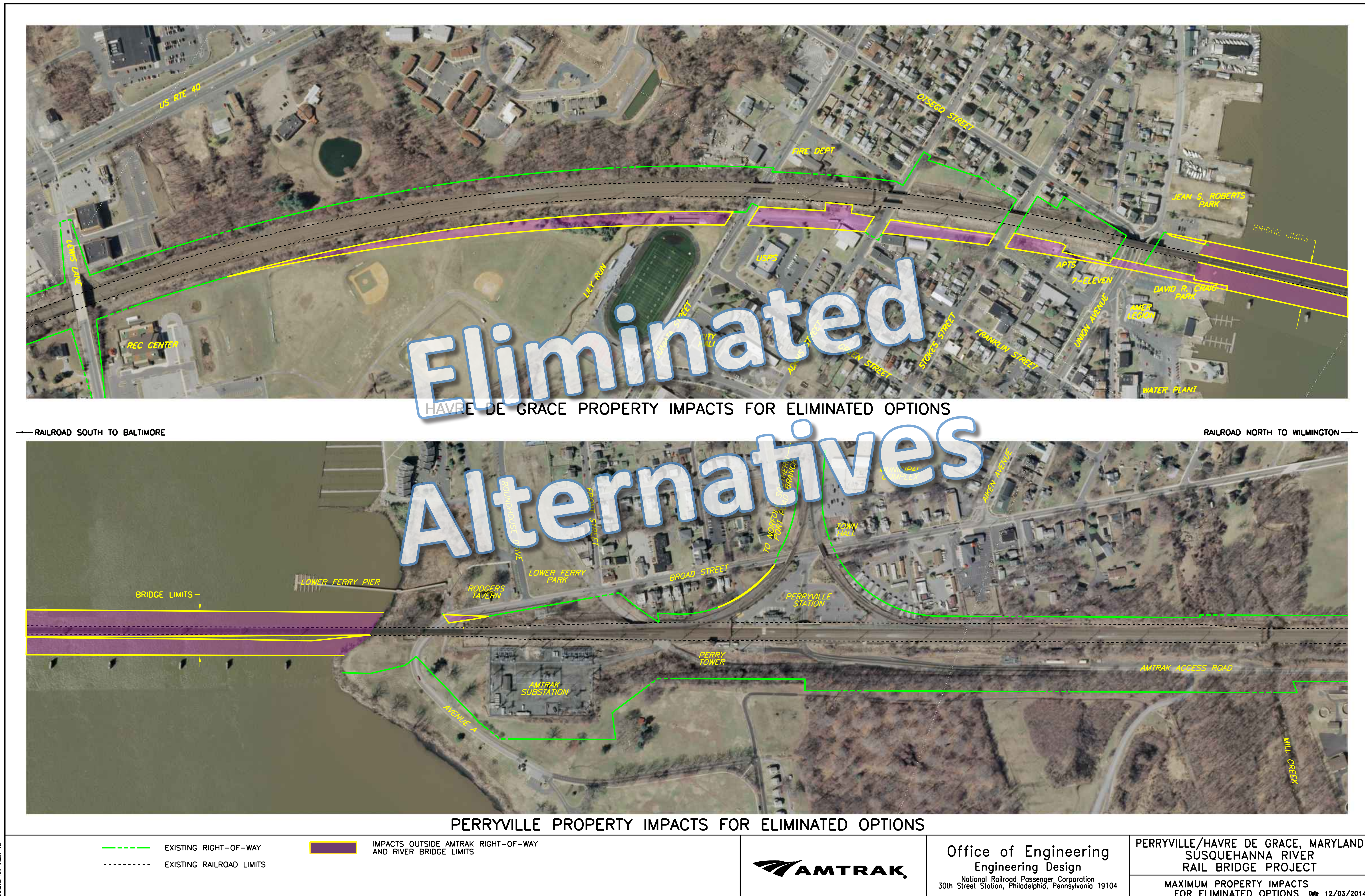


# Two-Step Alternatives Screening Results

- ***Fatal Flaw Screening—18 conceptual alignments were evaluated and 9 were eliminated***
  - Rehabilitation of existing bridge was eliminated; not feasible from construction and engineering perspective; will fail to provide continued rail connectivity and meet navigational requirements
- ***Detailed Screening—9 remaining alignments and 1 value engineering alignment were evaluated; all but 3 alignments were eliminated***
  - Alignments eliminated based on maximum achievable speed, number of tracks, and property impacts
- ***Alternatives Retained for Detailed Study—Alignments 1B, 9A, and 9B***



# Potential Property Impacts from Eliminated Alternatives



12/27/2014 11:09:53 AM  
P:\01\BOLLE\AS\BOLLE  
PROJECTS\2014\12\03



# Alternatives Comparison Matrix

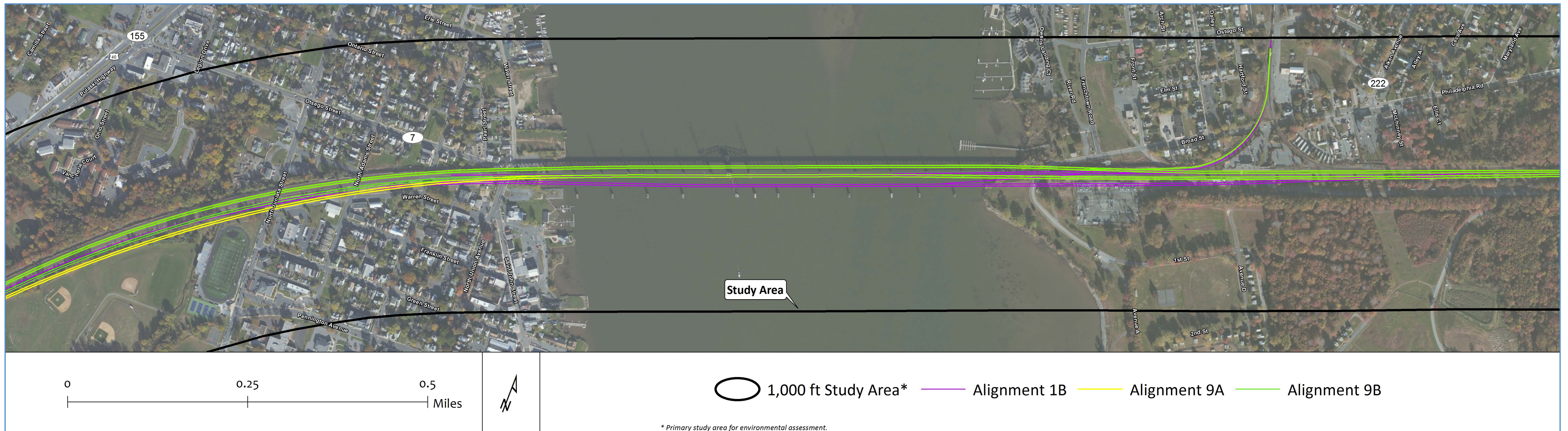
Screening Criteria	Alt 1B	Alt 4B	Alt 4C	Alt 4D	Alt 4E	Alt 8A	Alt 8B	Alt 9A	Alt 9B	VE
<b>IMPROVE RAIL SERVICE RELIABILITY AND SAFETY</b>										
Eliminates operational disruptions/delays	Yes	Yes	Yes	Yes	Yes	Yes	Yes	Yes	Yes	Yes
Connects to NS wye and provides grades acceptable for freight operations	Yes	Yes	Yes	Yes	Yes	Yes	Yes	Yes	Yes	Yes
Number of bridge structures	2	2	2	1	1	2	1	2	2	2
<b>IMPROVE OPERATIONAL FLEXIBILITY AND ACCOMMODATE REDUCED TRIP TIMES</b>										
Reduces operational conflicts	Excellent	Excellent	Excellent	Fair	Fair	Excellent	Fair	Excellent	Excellent	Excellent
Eliminates or reduces speed restrictions for intercity trains	Eliminates	Eliminates	Eliminates	Eliminates	Eliminates	Reduces	Reduces	Eliminates	Eliminates	Eliminates
Provides flexibility for operational and maintenance work windows	Very Good	Very Good	Very Good	Good	Good	Very Good	Good	Good	Good	Good
<b>OPTIMIZE EXISTING AND PLANNED INFRASTRUCTURE</b>										
Eliminates two-track section in this portion of NEC*	Excellent 4 Tracks	Excellent 4 Tracks	Excellent 4 Tracks	Good 3 Tracks	Good 3 Tracks	Excellent 4 Tracks	Good 3 Tracks	Excellent 4 Tracks	Excellent 4 Tracks	Excellent 4 Tracks
Does not preclude future high-speed rail (NEC Future)*	140 mph Good	160 mph Excellent	135 mph Good	160 mph Excellent	135mph Good	120 mph Fair	120 mph Fair	160 mph Excellent	150 mph Very Good	140 mph Good
Impacts to Perry Substation	Major	Major	Major	Major	Major	Major	Major	Moderate	Moderate	Major
Allows shared corridor with bike/ped path**	Does not preclude	Does not preclude	Does not preclude	Does not preclude	Does not preclude	Does not preclude	Does not preclude	Does not preclude	Does not preclude	Does not preclude
<b>MAINTAIN ADEQUATE NAVIGATION AND IMPROVE SAFETY ALONG THE SUSQUEHANNA RIVER</b>										
Provides suitable vertical clearance	Yes – 60'	Yes – 60'	Yes – 60'	Yes – 60'	Yes – 60'	Yes – 60'	Yes – 60'	Yes – 60'	Yes – 60'	Yes – 60'
Maintains or widens horizontal clearance	Yes- 200'+	Yes- 200'+	Yes- 200'+	Yes- 200'+	Yes-200'+	Yes- 200'+	Yes- 200'+	Yes- 200'+	Yes- 200'+	Yes- 200'+
Requires temporary winter closure of movable span?	Yes	Yes	Yes	Yes	Yes	Yes	Yes	Yes	Yes	Yes
<b>PROPERTY IMPACTS</b>										
Potential property impacts*	1 Commercial (Indirect) 1 Undeveloped (Partial)	1 Residential (Full) 1 Commercial (Full) 1 Commercial (Indirect) 1 Institutional (Partial) 2 Undeveloped (Full) 1 Undeveloped (Partial) 2 Park (Partial)	1 Residential (Full) 1 Commercial (Partial) 2 Undeveloped (Full) 1 Park (Partial)	1 Residential (Full) 1 Commercial (Full) 1 Commercial (Indirect) 1 Institutional (Partial) 2 Undeveloped (Full) 1 Undeveloped (Partial) 2 Park (Partial)	1 Residential (Full) 1 Commercial (Partial) 2 Undeveloped (Full) 1 Park (Partial)	1 Residential (Full) 1 Commercial (Partial) 2 Undeveloped (Full) 1 Park (Partial)	1 Commercial (Partial) 1 Commercial (Partial)	1 Residential (Partial) 1 Commercial (Full) 1 Undeveloped (Partial) 2 Park (Partial)	1 Residential (Partial) 1 Commercial (Partial) 1 Park (Partial)	1 Residential (Partial) 1 Commercial (Partial) 1 Park (Partial) 1 Undeveloped (Partial)
Retained for Further Evaluation?	<b>YES</b>	<b>NO</b>	<b>NO</b>	<b>NO</b>	<b>NO</b>	<b>NO</b>	<b>NO</b>	<b>YES</b>	<b>YES</b>	<b>NO</b>
Elimination Rationale	N/A	High property impacts	Better option available	High property impacts	Better option available	Undesirable Speed	Undesirable Speed	N/A	N/A	Better option available

\* Primary differentiator in selecting alternatives retained for detailed study | \*\* Feasibility evaluation in progress

  most desirable   more desirable   least desirable



# Alternatives Retained for Detailed Study



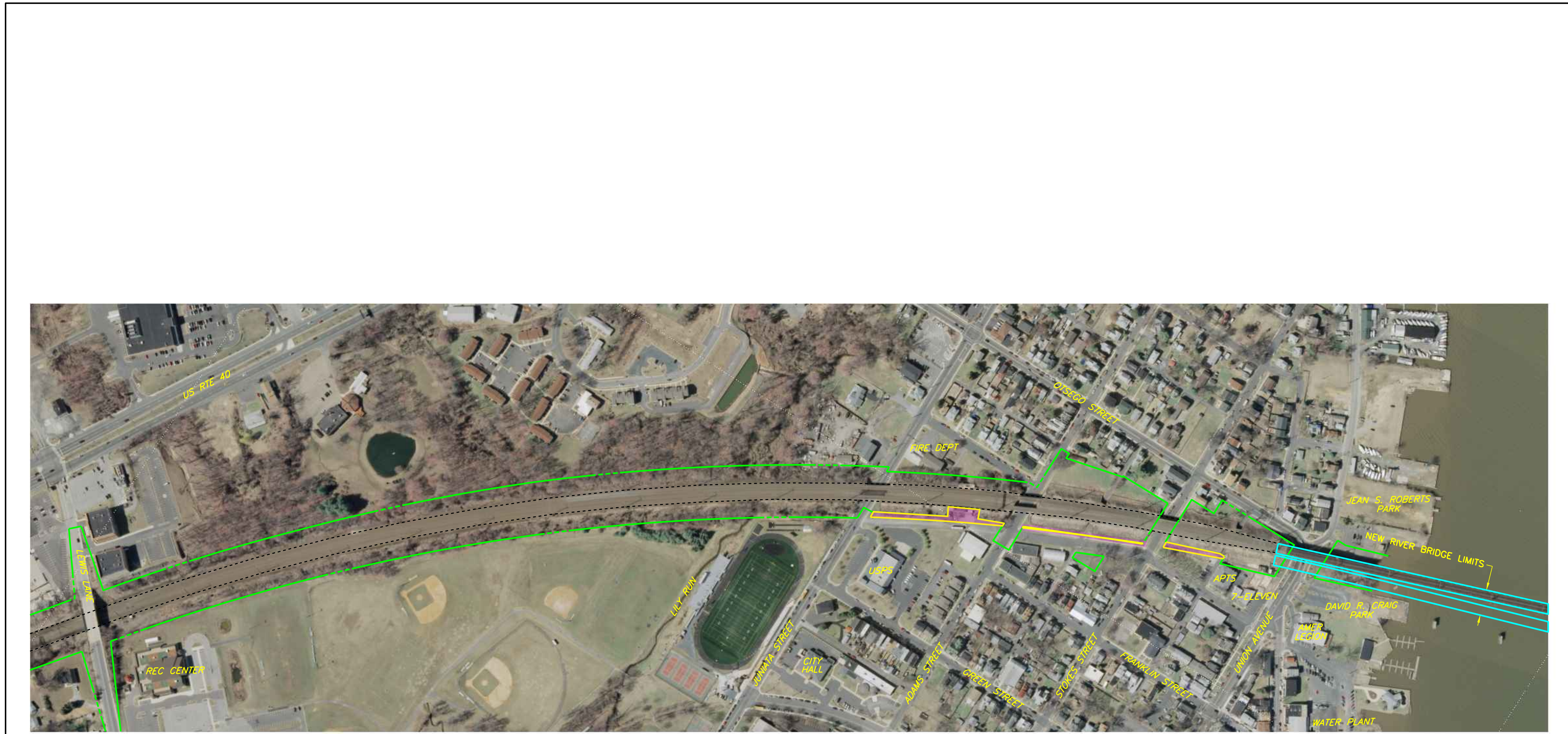
## Retained for detailed study: Alignments 1B, 9A, and 9B

- Allows for 4 track capacity with up to 160 mph max speed
- Lesser property impacts than other alternatives
- Compatible with several bridge types
- Maximum achievable speed, number of tracks, and property impacts were primary differentiators in selecting alignments





# Potential Property Impacts from Retained Alternatives



HAVRE DE GRACE PROPERTY IMPACTS FOR OPTION 1B: TWO DOUBLE-TRACK BRIDGES AT 140 MPH

← RAILROAD SOUTH TO BALTIMORE

RAILROAD NORTH TO WILMINGTON →

- - - - EXISTING RIGHT-OF-WAY
- IMPACTS OUTSIDE AMTRAK RIGHT-OF-WAY
- - - - EXISTING RAILROAD LIMITS
- NEW RIVER BRIDGE LIMITS



Office of Engineering  
Engineering Design  
National Railroad Passenger Corporation  
30th Street Station, Philadelphia, Pennsylvania 19104

PERRYVILLE/HAVRE DE GRACE, MARYLAND  
SUSQUEHANNA RIVER  
RAIL BRIDGE PROJECT

HAVRE DE GRACE - 1B  
PROPERTY IMPACT AREA Date 12/05/2014

12/2/2014 4:15:07 PM  
PLOT SCALE: AS SHOWN  
DRAWN BY: [unreadable]



# Potential Property Impacts from Retained Alternatives



HAVRE DE GRACE PROPERTY IMPACTS FROM OPTION 9A: TWO DOUBLE-TRACK BRIDGES AT 160 MPH

RAILROAD SOUTH TO BALTIMORE RAILROAD NORTH TO WILMINGTON



HAVRE DE GRACE PROPERTY IMPACTS FROM OPTION 9B: TWO DOUBLE-TRACK BRIDGES AT 150 MPH

- EXISTING RIGHT-OF-WAY
- EXISTING RAILROAD LIMITS
- IMPACTS OUTSIDE AMTRAK RIGHT-OF-WAY
- NEW RIVER BRIDGE LIMITS



Office of Engineering  
Engineering Design  
National Railroad Passenger Corporation  
30th Street Station, Philadelphia, Pennsylvania 19104

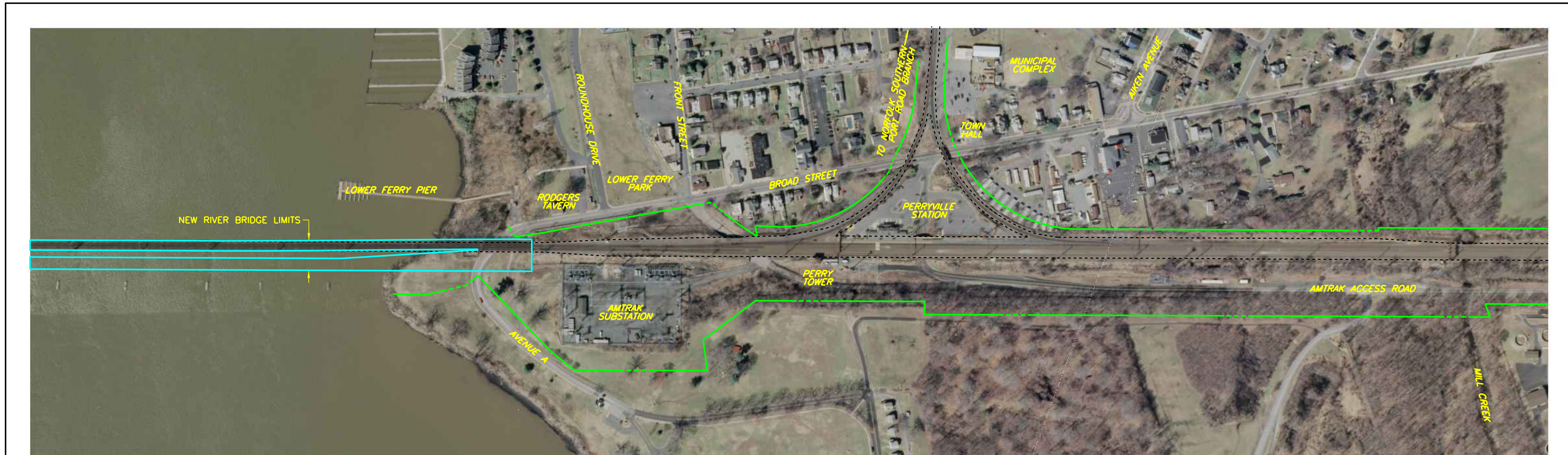
PERRYVILLE/HAVRE DE GRACE, MARYLAND  
SUSQUEHANNA RIVER  
RAIL BRIDGE PROJECT

HAVRE DE GRACE - 9A AND 9B  
PROPERTY IMPACT AREA Date: 12/05/2014

12/27/2014 4:15:13 PM  
P:\01\0001\AS\010001\AS\010001.dwg  
DWG: 010001.dwg



# Potential Property Impacts from Retained Alternatives



PERRYVILLE PROPERTY IMPACTS FROM OPTION 1B: TWO DOUBLE-TRACK BRIDGES AT 140 MPH



PERRYVILLE PROPERTY IMPACTS FROM OPTIONS 9A AND 9B: TWO DOUBLE-TRACK BRIDGES AT 150-160 MPH

- - - - - EXISTING RIGHT-OF-WAY
- IMPACTS OUTSIDE AMTRAK RIGHT-OF-WAY
- EXISTING RAILROAD LIMITS
- NEW RIVER BRIDGE LIMITS



Office of Engineering  
Engineering Design  
National Railroad Passenger Corporation  
30th Street Station, Philadelphia, Pennsylvania 19104

PERRYVILLE/HAVRE DE GRACE, MARYLAND  
SUSQUEHANNA RIVER  
RAIL BRIDGE PROJECT

PERRYVILLE - 1B, 9A, AND 9B  
PROPERTY IMPACT AREA Date 12/05/2014

12/27/2014 4:15:00 PM  
P:\01\0001\_05\_0000\05\_0000\05\_0000\05\_0000.dwg  
PERRYVILLE



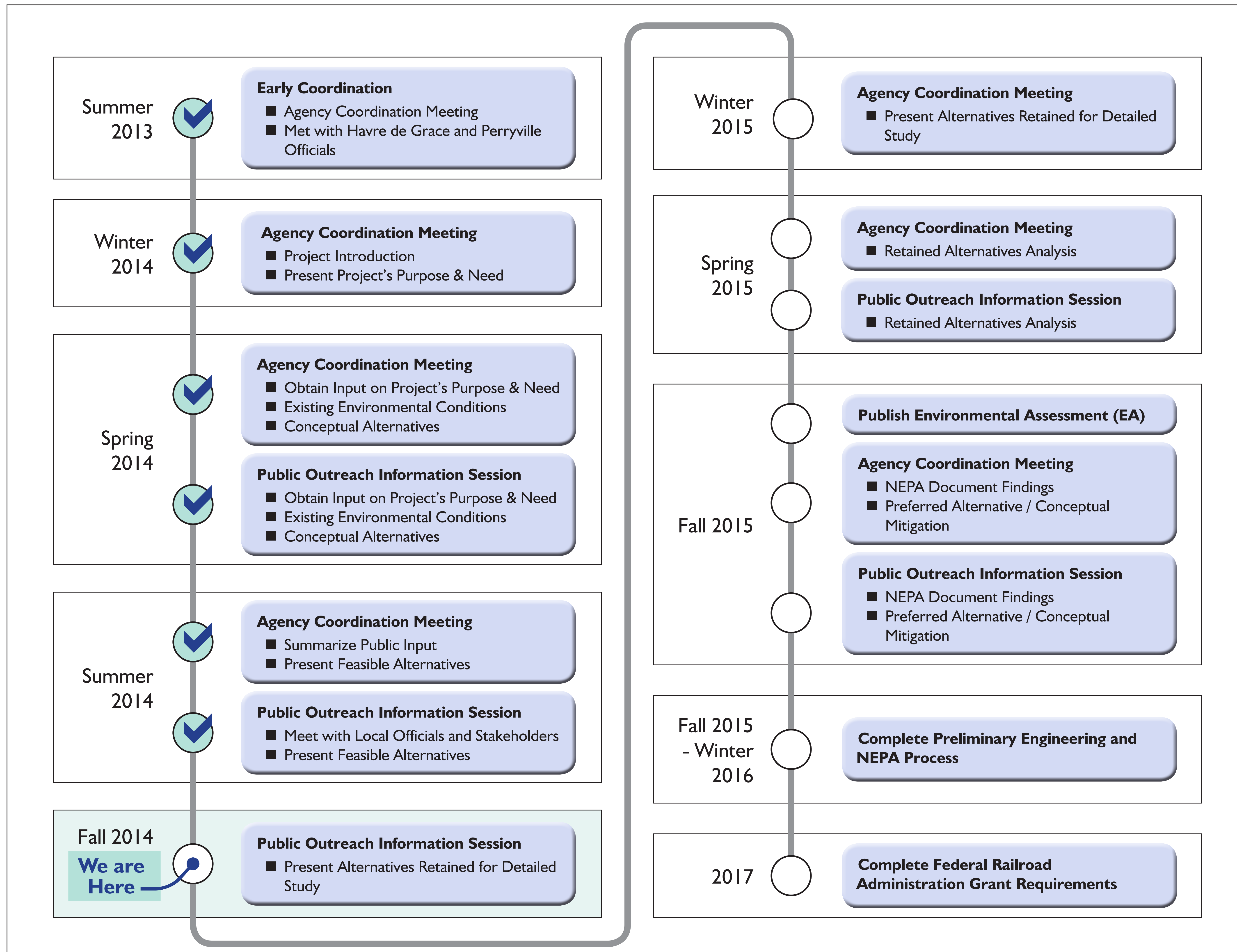


# Bridge Design Types - Example Renderings





# Anticipated Project Schedule





# Stay Connected

- Visit the project website at [www.susrailbridge.com](http://www.susrailbridge.com) to get project updates, learn more about the project, submit a comment, or join the project mailing list.
- Send a letter to:  
Susquehanna River Rail Bridge  
PO Box 68  
Elkton, MD 21922

